

FOR SALE OR LEASE FORMER AMC THEATER 300 WEST MAIN STREET | PARK HILLS, MO

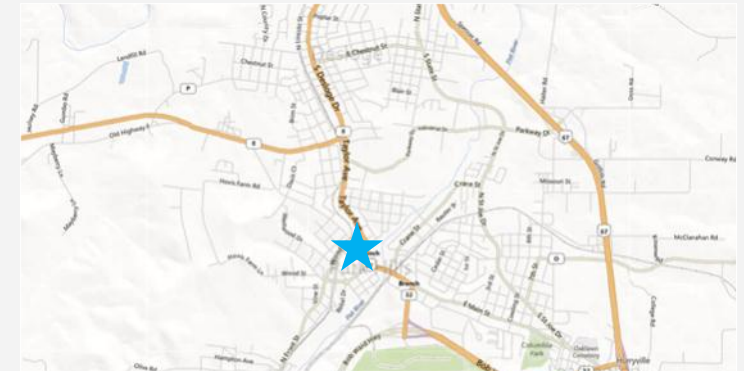


PROPERTY OVERVIEW

- 8,816 SF Former AMC Theater building
- Located at Main and Business 32
- Area retailers include County Market Grocery Store, Subway and H&R Block
- Located close to the public library
- Over 24,000 in population within 5 miles of property

DEMOGRAPHICS | 2013

| | 1 mile | 3 miles | 5 miles | 10 miles |
|---------------|----------|----------|----------|----------|
| Population | 4,538 | 16,242 | 24,662 | 61,773 |
| Households | 1,824 | 6,592 | 9,841 | 22,531 |
| Avg HH Income | \$39,257 | \$46,808 | \$49,526 | \$51,348 |

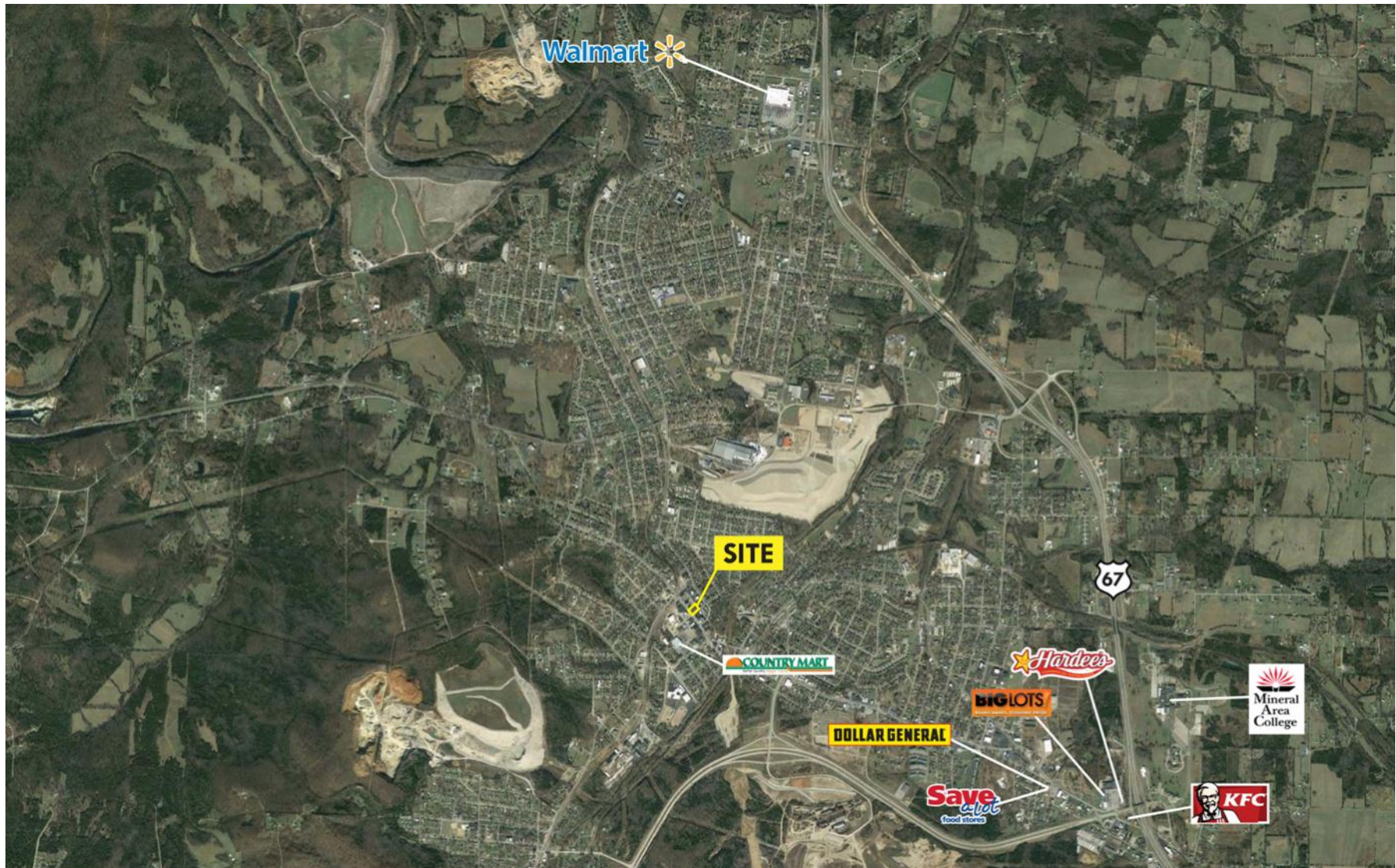


For Information Contact:

SCOTT BITNEY
314.282.9826 (direct)
314.469.7400 (office)
314.276.4673 (mobile)
Scott@L3Corp.net



FOR SALE OR LEASE FORMER AMC THEATER
300 West Main Street | Park Hills, MO



For Information Contact:

SCOTT BITNEY
314.282.9826 (direct)
314.469.7400 (office)
314.276.4673 (mobile)
Scott@L3Corp.net



L3 Corporation • 211 North Lindbergh Boulevard, Suite 150 • St. Louis, MO 63141 (t) 314.469.7400 (f) 314.576.9768 • www.L3Corp.net

The information in this flyer has been obtained from sources believed reliable. While we do not doubt its accuracy, we have not verified it and make no guarantee about it. It is your responsibility to independently confirm its accuracy and completeness. Any projections, opinions, assumptions or estimates used are for example only and do not represent the current or future performance of the property. The value of this transaction to you depends on tax and other factors which should be evaluated by your tax, financial and legal advisors. You and your advisors should conduct a careful, independent investigation of the property to determine to your satisfaction the suitability of the property for your needs.