

FOR LEASE FORMER MACARONI GRILL

121 Costco Way | St. Peters, MO



PROPERTY OVERVIEW

- ◆ 7,216 SF building on 1.22 acre site with 80 parking spaces
- ◆ Located on an outparcel to The Crossings at Mid Rivers shopping center anchored by Costco, Marshalls, HomeGoods and HH Gregg
- ◆ Next to Mid Rivers Mall, the only mall in St. Charles county, a one million square foot mall anchored by Dillard's, Macy's, JCPenney and Sears, with 140 specialty stores, a movie theater and several other restaurants such as Chili's Grill & Bar, Max & Erma's and Ruby Tuesday
- ◆ Good visibility from Interstate 70 with 138,610 vehicles per day
- ◆ High population growth market
- ◆ Lease rate: call broker

DEMOGRAPHICS | 2014

| | 1 mile | 3 miles | 5 miles |
|---------------|----------|----------|----------|
| Population | 5,575 | 52,900 | 148,604 |
| Households | 2,476 | 20,911 | 58,711 |
| Avg HH Income | \$71,760 | \$81,517 | \$84,289 |

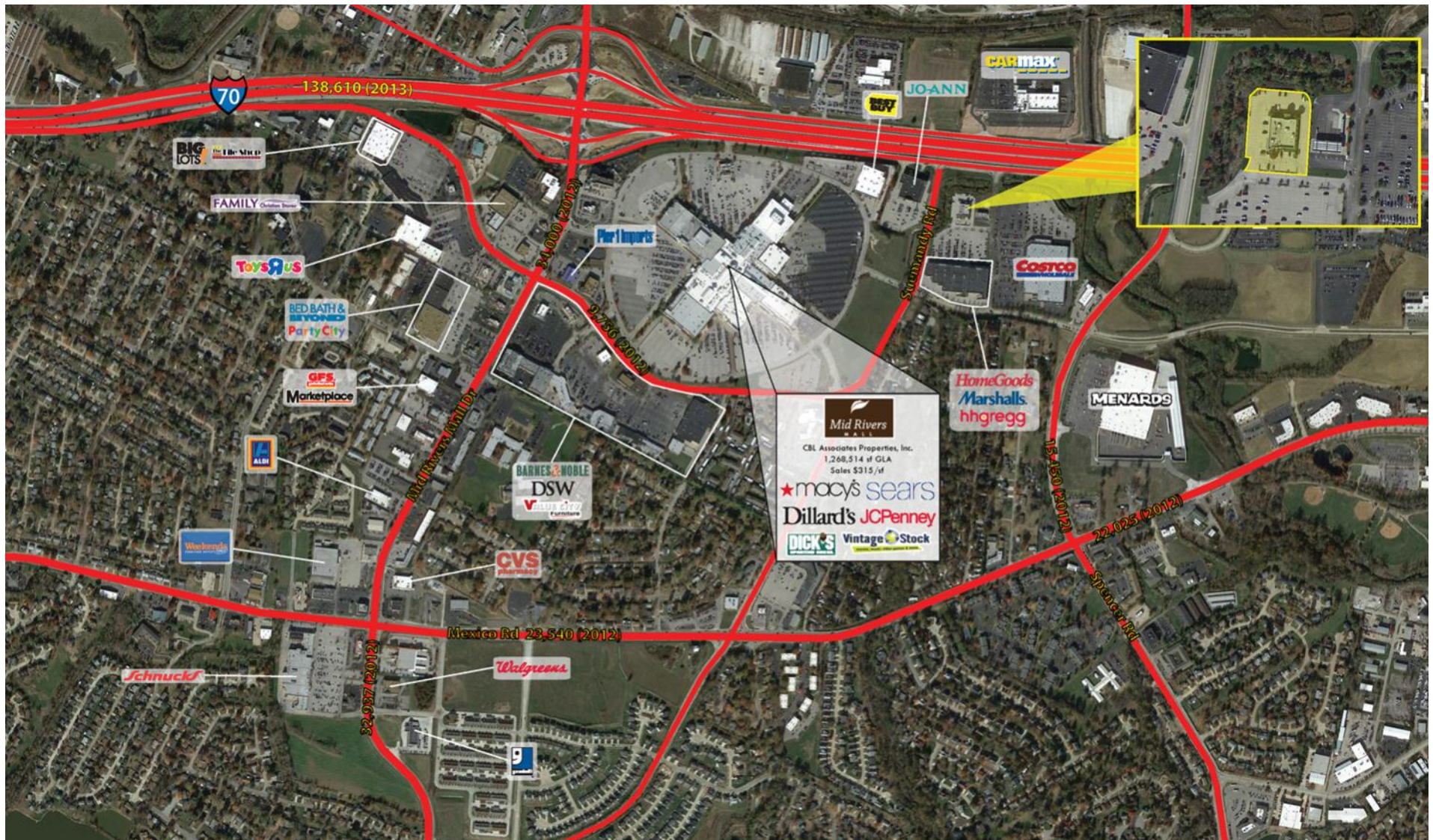
For Information Contact:

JAY COHEN
314.282.9833 (direct)
314.469.7400 (office)
314.303.9400 (cell)
Jay@L3Corp.net



121 Costco Way | St. Peters, MO

121 Costco Way | St. Peters, MO



For Information Contact:

JAY COHEN
314.282.9833 (direct)
314.469.7400 (office)
314.303.9400 (cell)
Kevin@L3Corp.net



L3 Corporation • 211 North Lindbergh Boulevard, Suite 150 • St. Louis, MO 63141 (t) 314.469.7400 (f) 314.576.9768 • www.L3Corp.net

The information in this flyer has been obtained from sources believed reliable. While we do not doubt its accuracy, we have not verified it and make no guarantee about it. It is your responsibility to independently confirm its accuracy and completeness. Any projections, opinions, assumptions or estimates used are for example only and do not represent the current or future performance of the property. The value of this transaction to you depends on tax and other factors which should be evaluated by your tax, financial and legal advisors. You and your advisors should conduct a careful, independent investigation of the property to determine to your satisfaction the suitability of the property for your needs.