

FOR LEASE 6323 DELMAR BLVD. University City, MO



1,217 - 6,592 SF Available

- Landlord will demise
- Heart of the Delmar Loop, premier **urban** retail space
- Attached to parking garage; street parking in front
- Next to new 400+ bed student housing
- High exposed ceilings
- Tenants within one block of site include the new United Provisions grocery store, Blueberry Hill, Tivoli Theatre, Three Kings Public House, Mission Taco and much more
- Trolley coming in 2015
- High Speed Internet Fiber coming in 2015
- \$22.00 - \$25.00 NNN per square foot

Demographics

2013 ESTIMATED	1 Mile	3 Mile	5 Mile
Population	22,746	139,062	353,639
Households	8,880	62,373	156,380
Avg. Income	\$74,099	\$73,445	\$65,255



For Information Contact:

KEVIN SHAPIRO
314-469-7400 (o)
314-283-4691 (m)
Kevin@L3Corp.net

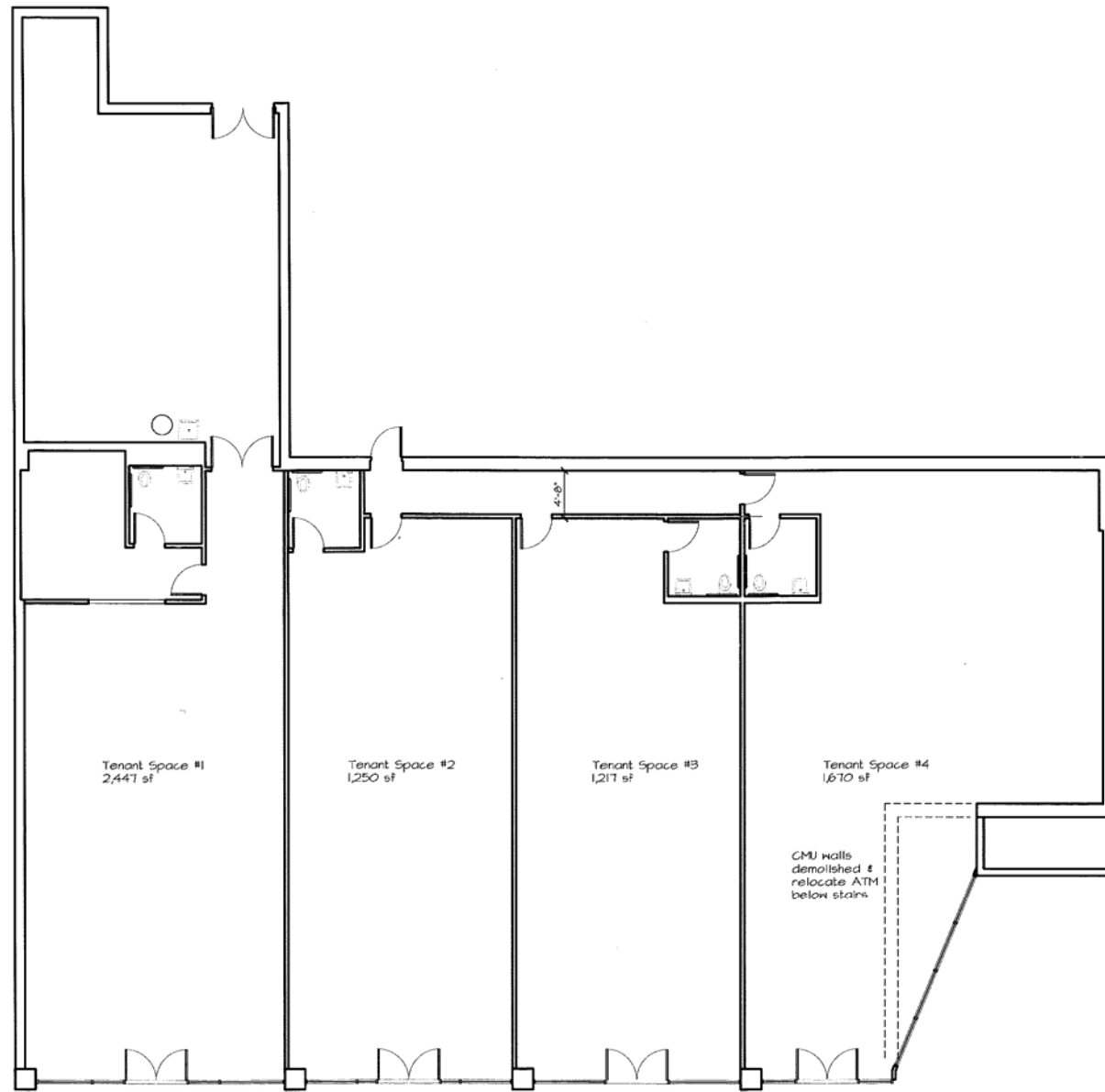
ALEX APTER
314-469-7400 (o)
314-488-5900 (m)
Alex@L3Corp.net



211 North Lindbergh Boulevard, Suite 150 • St. Louis, MO 63141 (t) 314-469-7400 (f) 314-576-9768 • www.L3Corp.net

The information in this flyer has been obtained from sources believed reliable. While we do not doubt its accuracy, we have not verified it and make no guarantee about it. It is your responsibility to independently confirm its accuracy and completeness. Any projections, opinions, assumptions or estimates used are for example only and do not represent the current or future performance of the property. The value of this transaction to you depends on tax and other factors which should be evaluated by your tax, financial and legal advisors. You and your advisors should conduct a careful, independent investigation of the property to determine to your satisfaction the suitability of the property for your needs.

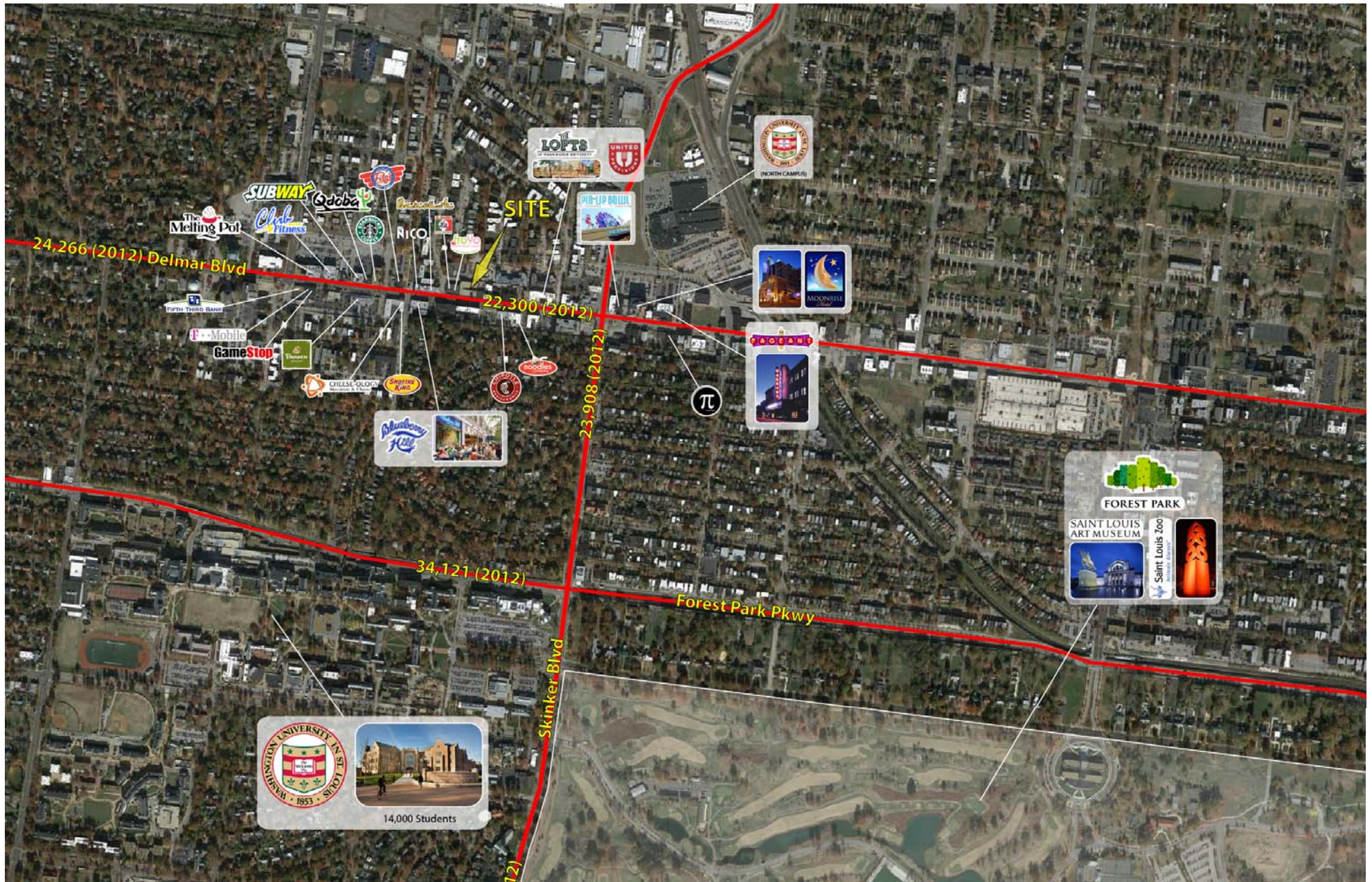
6323 DELMAR BOULEVARD
UNIVERSITY CITY, MISSOURI



211 North Lindbergh Boulevard, Suite 150 • St. Louis, MO 63141 (t) 314-469-7400 (f) 314-576-9768 • www.L3Corp.net

The information in this flyer has been obtained from sources believed reliable. While we do not doubt its accuracy, we have not verified it and make no guarantee about it. It is your responsibility to independently confirm its accuracy and completeness. Any projections, opinions, assumptions or estimates used are for example only and do not represent the current or future performance of the property. The value of this transaction to you depends on tax and other factors which should be evaluated by your tax, financial and legal advisors. You and your advisors should conduct a careful, independent investigation of the property to determine to your satisfaction the suitability of the property for your needs.

6323 DELMAR BOULEVARD
UNIVERSITY CITY, MISSOURI

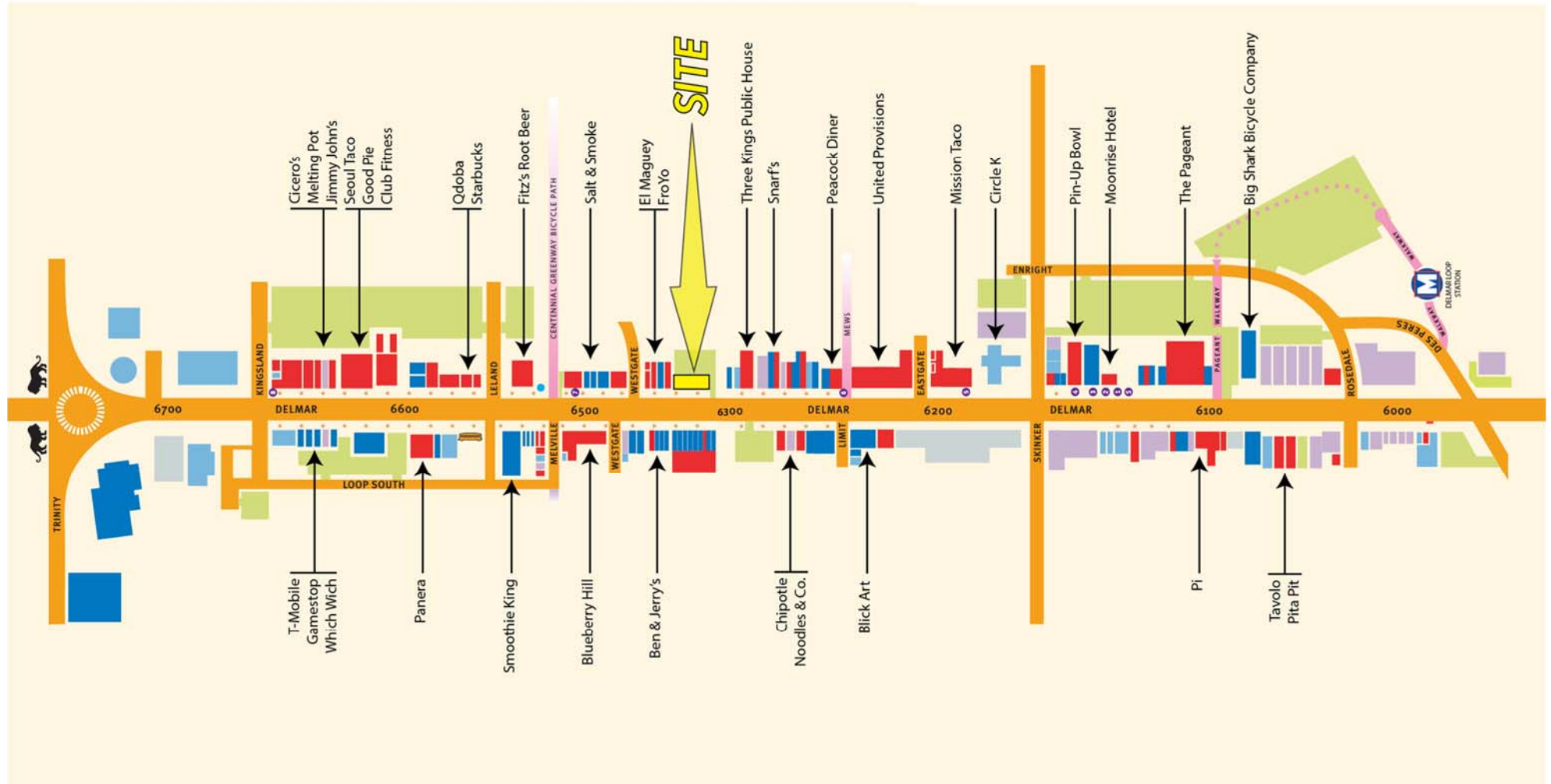


211 North Lindbergh Boulevard, Suite 150 • St. Louis, MO 63141 (t) 314-469-7400 (f) 314-576-9768 • www.L3Corp.net

The information in this flyer has been obtained from sources believed reliable. While we do not doubt its accuracy, we have not verified it and make no guarantee about it. It is your responsibility to independently confirm its accuracy and completeness. Any projections, opinions, assumptions or estimates used are for example only and do not represent the current or future performance of the property. The value of this transaction to you depends on tax and other factors which should be evaluated by your tax, financial and legal advisors. You and your advisors should conduct a careful, independent investigation of the property to determine to your satisfaction the suitability of the property for your needs.

6323 DELMAR BOULEVARD

UNIVERSITY CITY, MISSOURI



211 North Lindbergh Boulevard, Suite 150 • St. Louis, MO 63141 (t) 314-469-7400 (f) 314-576-9768 • www.L3Corp.net

The information in this flyer has been obtained from sources believed reliable. While we do not doubt its accuracy, we have not verified it and make no guarantee about it. It is your responsibility to independently confirm its accuracy and completeness. Any projections, opinions, assumptions or estimates used are for example only and do not represent the current or future performance of the property. The value of this transaction to you depends on tax and other factors which should be evaluated by your tax, financial and legal advisors. You and your advisors should conduct a careful, independent investigation of the property to determine to your satisfaction the suitability of the property for your needs.