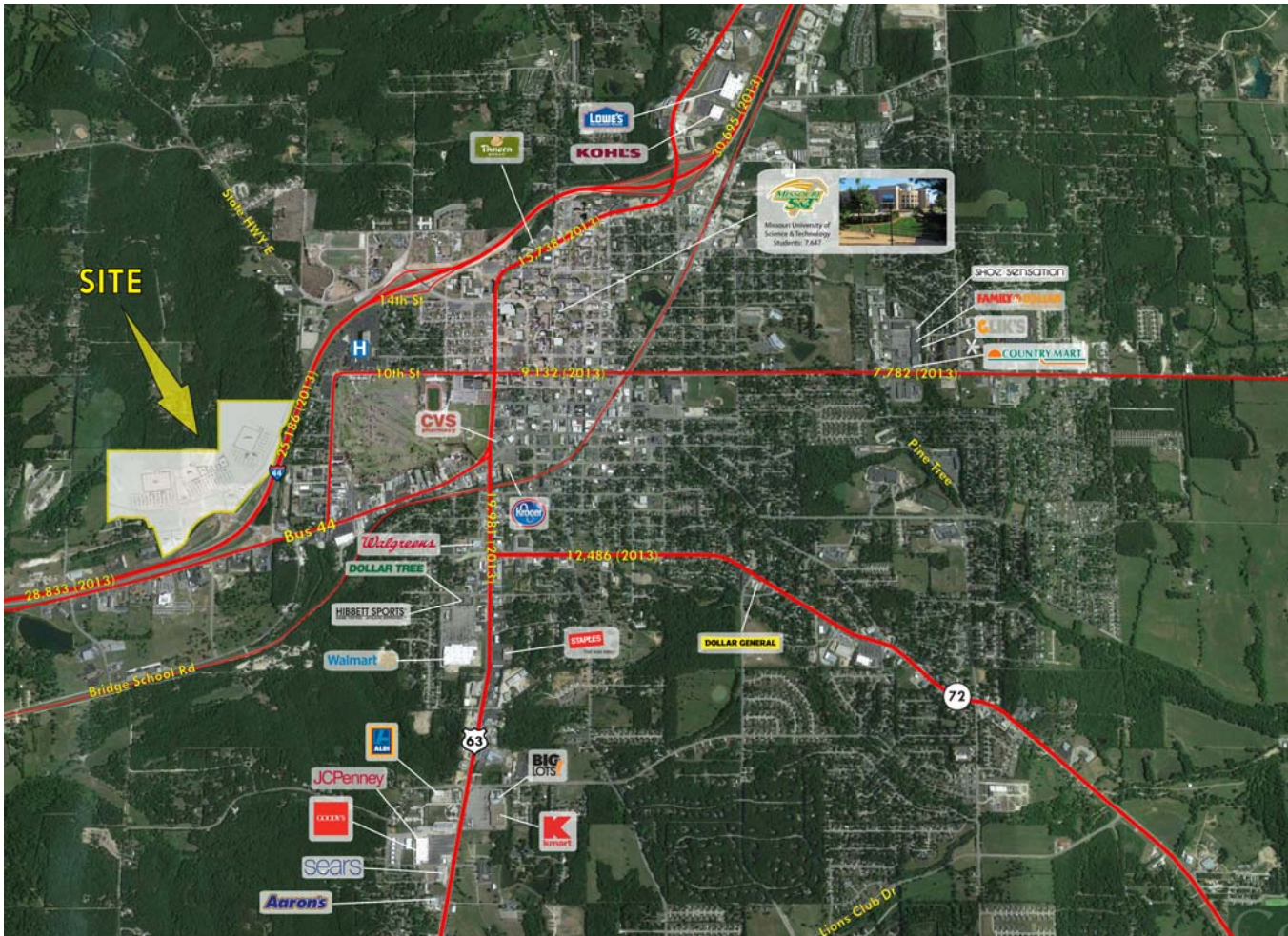


COMING SOON NEW RETAIL DEVELOPMENT NEC INTERSTATE 44 & SALLY RD | ROLLA, MO

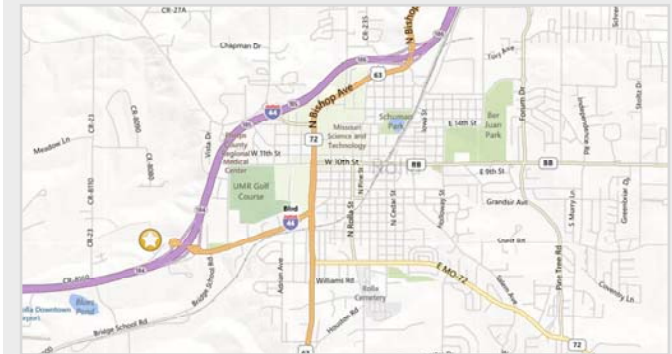


PROPERTY INFORMATION

- New Retail Development located on Interstate 44
- Home to Missouri State University of Science and Technology: 7,647 Students | 1,398 Staff
- 30 Minutes from Fort Leonard Wood: 40,000 Students and Staff
- County Seat of Phelps County
- Halfway between Springfield and St. Louis

DEMOGRAPHICS | 2014

	1 mile	3 miles	5 miles	10 miles
Population	1,281	17,647	24,848	35,452
Households	541	6,931	9,917	14,131
Avg HH Inc	\$38,878	\$47,492	\$50,305	\$54,492
Median Inc	\$30,416	\$37,726	\$39,209	\$43,298



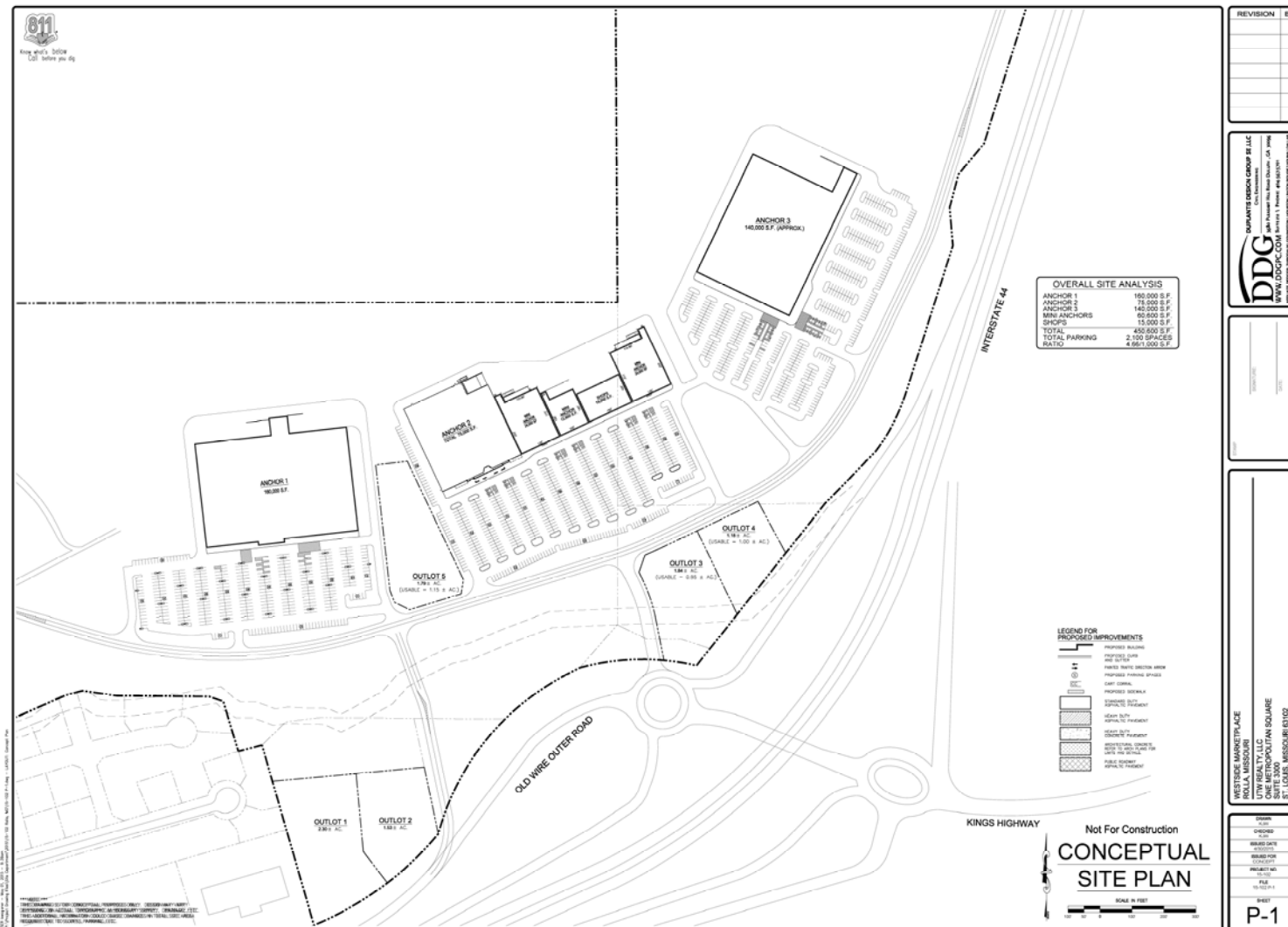
For Information Contact:

SCOTT BITNEY
314.282.9826 (dd)
314.469.7400 (o)
314.276.4673 (m)
Scott@L3Corp.net

IAN SILBERMAN
314.282.9828 (dd)
314.469.7400 (o)
314.409.9904 (m)
Ian@L3Corp.net



COMING SOON NEW RETAIL DEVELOPMENT
NEC Interstate 44 & Sally Rd | Rolla, MO



For Information Contact:

SCOTT BITNEY
314.282.9826 (dd)
314.469.7400 (o)
314.276.4673 (m)
Scott@L3Corp.net

IAN SILBERMAN
314.282.9828 (dd)
314.469.7400 (o)
314.409.9904 (m)
lan@L3Corp.net



L3 Corporation • 211 North Lindbergh Boulevard, Suite 150 • St. Louis, MO 63141 (t) 314.469.7400 (f) 314.576.9768 • www.L3Corp.net

The information in this flyer has been obtained from sources believed reliable. While we do not doubt its accuracy, we have not verified it and make no guarantee about it. It is your responsibility to independently confirm its accuracy and completeness. Any projections, opinions, assumptions or estimates used are for example only and do not represent the current or future performance of the property. The value of this transaction to you depends on tax and other factors which should be evaluated by your tax, financial and legal advisors. You and your advisors should conduct a careful, independent investigation of the property to determine to your satisfaction the suitability of the property for your needs.