

# NORTHPOINT SHOPPING CENTER



**FOR LEASE**  
**7TH STREET & RANGE LINE ROAD . JOPLIN . MISSOURI**

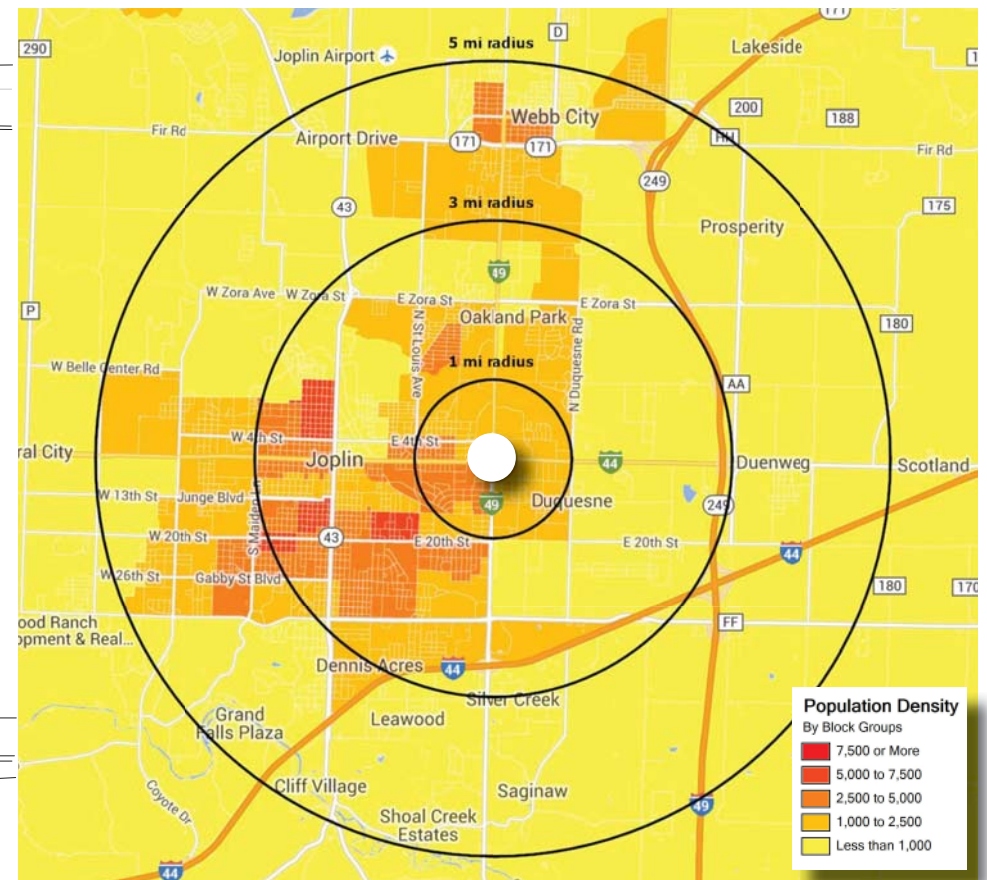
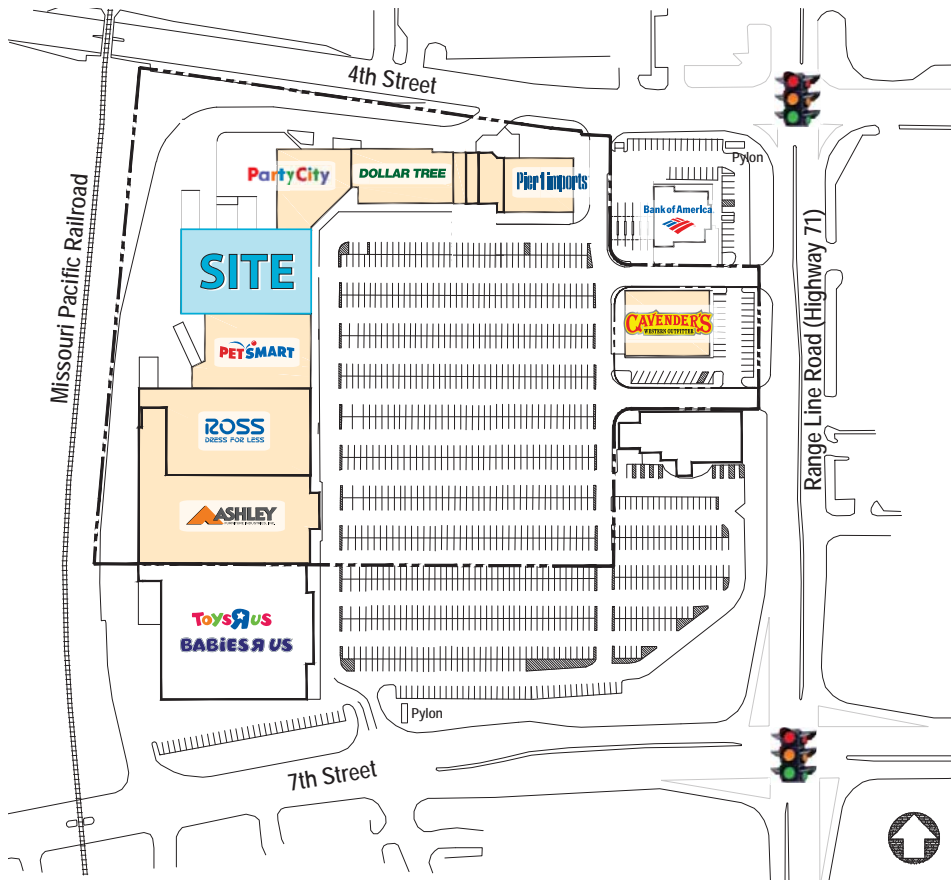
JOIN RETAILERS SUCH AS ASHLEY FURNITURE, BABIES R US, PETSMART AND ROSS DRESS FOR LESS IN THIS SHOPPING CENTER LOCATED ON THE HEAVILY TRAVELED RANGE LINE ROAD IN JOPLIN, MO.

**L<sup>3</sup> CORPORATION**  
COMMERCIAL REAL ESTATE




211 N. LINDBERGH BLVD . SUITE 150  
SAINT LOUIS . MISSOURI . 63141  
314.469.7400 . WWW.L3CORP.NET



# S I T E P L A N



- LOCATED ON HIGHLY TRAVELED RANGE LINE RD - A KEY CORRIDOR THROUGH JOPLIN.
- ANCHORED BY ASHLEY FURNITURE, BABIES R US, PETSMART AND ROSS DRESS FOR LESS.
- ADDITIONAL AREA RETAIL INCLUDES: MACY'S, SEARS, JCPENNEY, OLD NAVY, TJ MAXX, TARGET, KOHL'S, MICHAEL'S AND BED, BATH & BEYOND.
- OVER 28,000 VEHICLES PER DAY ON RANGE LINE RD, AND OVER 16,000 VEHICLES PER DAY ON 7TH ST.
- OVER 71,000 IN POPULATION WITHIN A 5 MILE RADIUS.

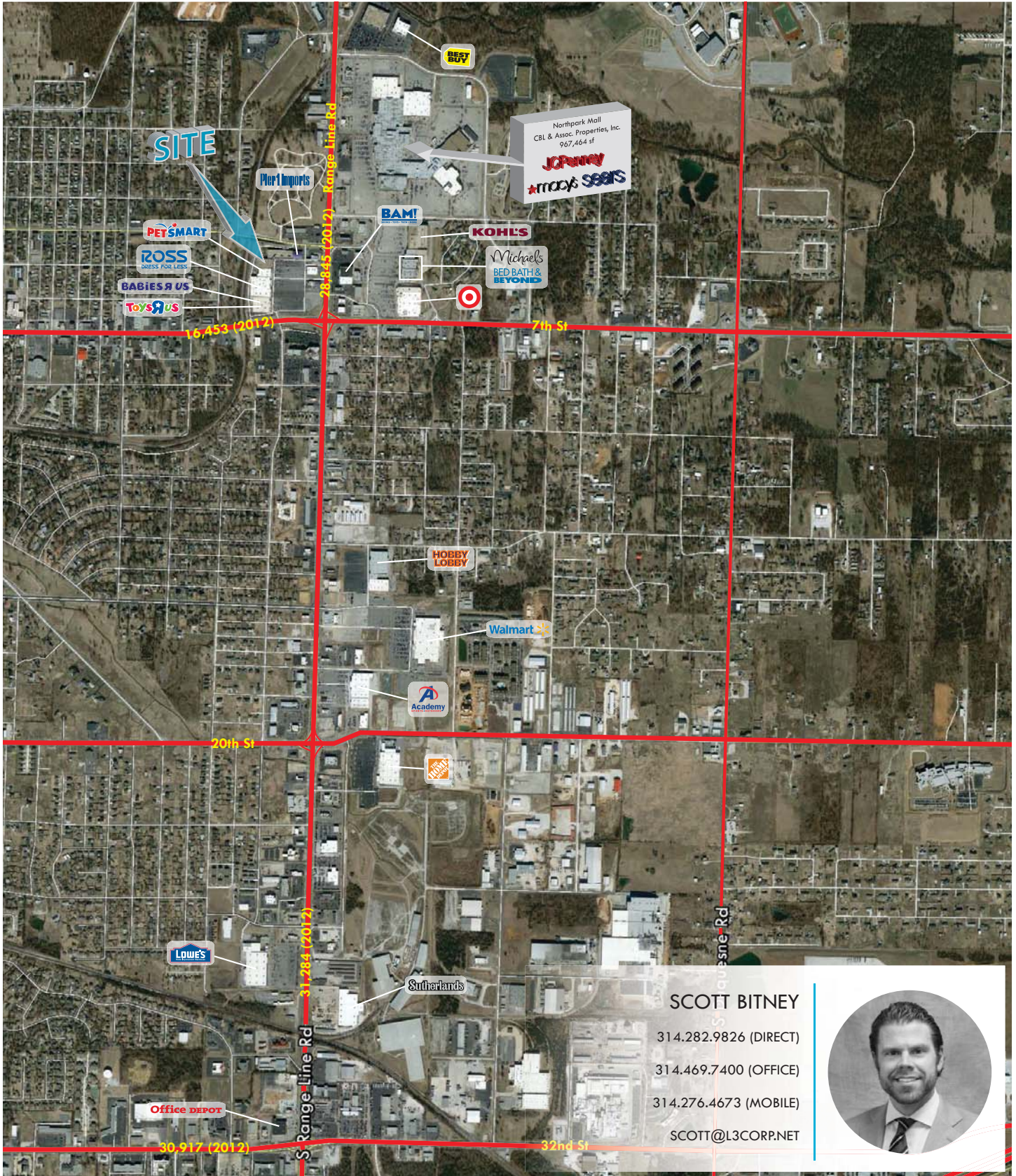
POPULATION (2015)	1 MILE	3 MILES	5 MILES
	5,889	43,466	71,881
HOUSEHOLDS (2015)	1 MILE	3 MILES	5 MILES
	2,803	18,988	30,531
AVG HH INCOME (2015)	1 MILE	3 MILES	5 MILES
	\$45,492	\$47,486	\$51,982

**L<sup>3</sup> CORPORATION**  
COMMERCIAL REAL ESTATE

211 N. LINDBERGH BLVD. SUITE 150  
SAINT LOUIS, MISSOURI 63141  
314.469.7400 WWW.L3CORP.NET



# A E R I A L



**SCOTT BITNEY**

314.282.9826 (DIRECT)

314.469.7400 (OFFICE)

314.276.4673 (MOBILE)

SCOTT@L3CORP.NET



**L<sup>3</sup> CORPORATION**  
COMMERCIAL REAL ESTATE

2111 N. LINDBERGH BLVD. SUITE 150  
SAINT LOUIS, MISSOURI 63141  
314.469.7400 WWW.L3CORP.NET

The information in this flyer has been obtained from sources believed reliable. While we do not doubt its accuracy, we have not verified it and make no guarantee about it. It is your responsibility to independently confirm its accuracy and completeness. Any projections, opinions, assumptions or estimates used are for example only and do not represent the current or future performance of the property. The value of this transaction to you depends on tax and other factors which should be evaluated by your tax, financial and legal advisors. You and your advisors should conduct a careful, independent investigation of the property to determine to your satisfaction the suitability of the property for your needs.