

# NAMEOKI COMMONS

3401-3551 NAMEOKI RD | RETAIL SPACE AVAILABLE FOR  
LEASE IN SHOP 'N SAVE ANCHORED DEVELOPMENT ON  
BUSY NAMEOKI ROAD IN GRANITE CITY, IL.

RECENTLY  
ADDED:

..T..Mobile..



cricket  
wireless



H&R BLOCK

GNC

Clarkson  
Eyecare



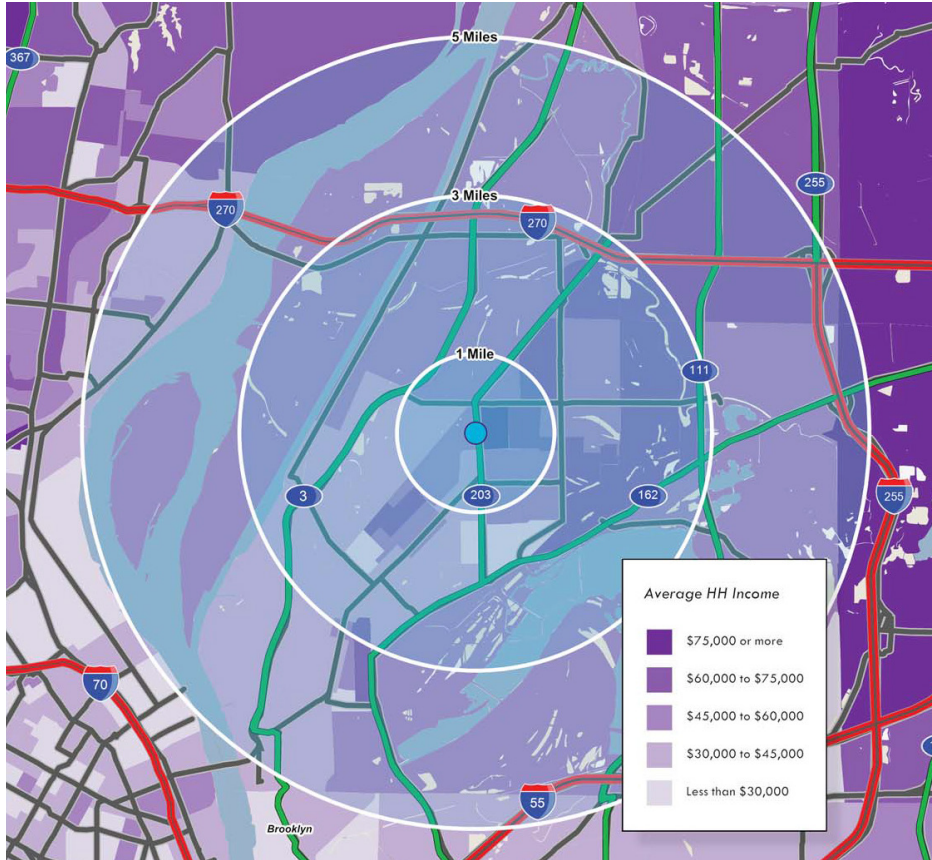
Sprint



L<sup>3</sup> CORPORATION  
COMMERCIAL REAL ESTATE



# MARKET OVERVIEW



## POPULATION



1 MILE  
10,409

3 MILES  
38,691

5 MILES  
57,363

## HOUSEHOLDS



1 MILE  
4,581

3 MILES  
16,276

5 MILES  
23,455

## AVG HH INCOME



1 MILE  
\$59,248

3 MILES  
\$55,121

5 MILES  
\$52,107

Granite City, located in Madison County, Illinois, is the second largest city in the Metro East and Southern Illinois regions. Officially founded in 1896, Granite City was named by the Niedringhaus brothers, William and Frederick, who established it as a steel making company town for the manufacture of kitchen utensils made to resemble granite. Granite City also has a well-trained workforce, a business-friendly atmosphere, strong infrastructure including multiple rail lines, a stellar port district on the Mississippi River, easy access to four major interstates (going in all directions) and is less than 25 minutes away from Lambert International Airport in St. Louis. Granite City's leading employers include U.S. Steel, ASF-Keystone/Amsted Rail, Gateway Regional Medical Center, Granite City School District #9 and Kraft Foods.

Granite City is where art and industry meet. In the past few years, the downtown area has become home to several exciting new businesses, all anchored by the new Granite City Cinema. Additionally, the Granite City Historical Society is located in the Emmert-Zipple House which is also home to the Old Six Mile Museum. The home, built in 1830 by the Emmert family, one of Granite City's first families, is on the National Register of Historical Places. The museum highlights the history of the Granite City area which used to be known as Six Mile Prairie because it is located six miles from St. Louis. Another historically significant museum is the Old Fire Engine Museum which has antique firefighting equipment and memorabilia on display and is located in Downtown Granite City.

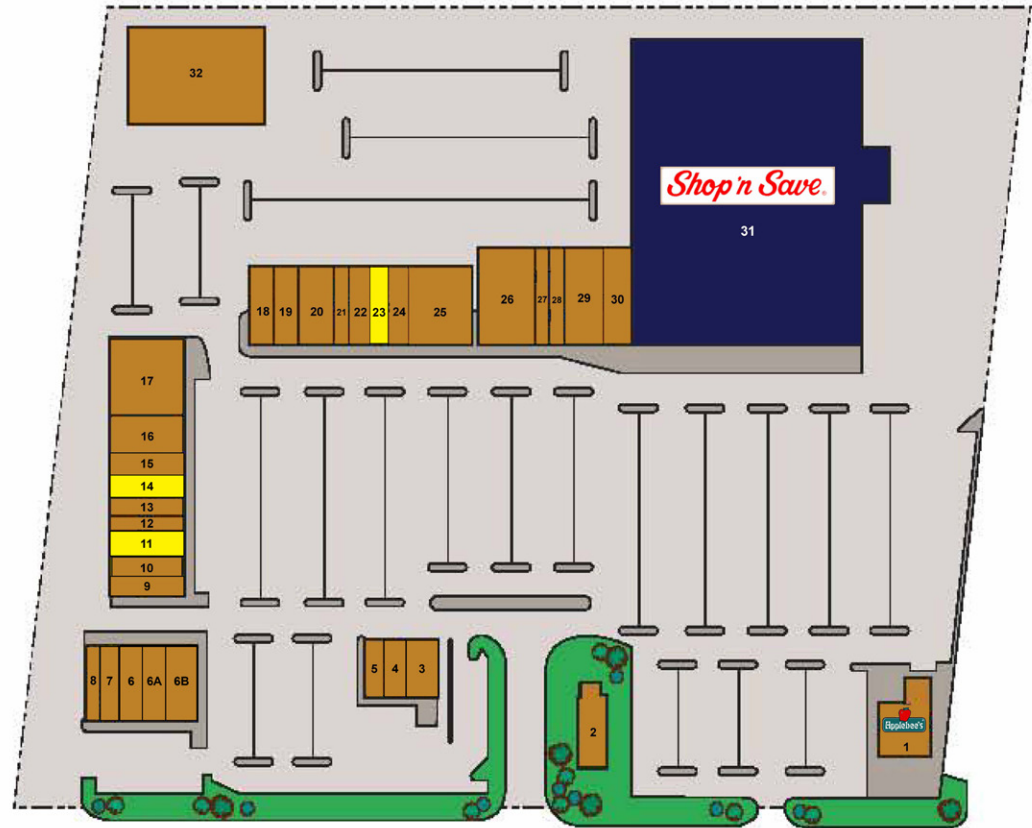


**L<sup>3</sup> CORPORATION**  
COMMERCIAL REAL ESTATE

211 N. LINDBERGH BLVD. SUITE 150  
SAINT LOUIS, MISSOURI 63141  
314.469.7400 . WWW.L3CORP.NET

# S I T E P L A N

NAMEOKI COMMONS 155,421 SF		
Suite	Tenant	Area
1	Applebee's	3,826 SF
2	Arby's	3,400 SF
3	Verizon Wireless	1,700 SF
4	GNC	1,135 SF
5	AT&T	1,500 SF
6	Wingstop	1,833 SF
6A	Sprint	1,833 SF
6B	Clarkson Eyecare	2,250 SF
7	H&R Block	1,510 SF
8	Church's Chicken	1,500 SF
9	Cricket Wireless	1,600 SF
10	3D Vapor	1,600 SF
11	<b>AVAILABLE</b>	<b>2,000 SF</b>
12	Yellow Key Insurance	1,200 SF
13	China King	1,600 SF
14	<b>AVAILABLE</b>	<b>1,600 SF</b>
15	T-Mobile	1,600 SF
16	El Torero	3,200 SF
17	Club Fitness	6,000 SF
18	Penn Station	2,073 SF
19	Key Largo Tan	1,927 SF
20	Hallmark	4,800 SF
21	Do Ce Rok	1,600 SF
22	My Nails	1,600 SF
23	<b>AVAILABLE</b>	<b>1,600 SF</b>
24	Sally Beauty Supply	1,600 SF
25	Blue Sky Dental	3,200 SF
26	Hibbett Sports	5,335 SF
27	Missouri Payday Loans	1,500 SF
28	Great Clips	1,500 SF
29	CATO	4,000 SF
30	Payless	3,000 SF
31	Shop 'N Save	69,000 SF
32	Tee Profits Pro	11,800 SF



NAMEOKI STREET

- SHOP 'N SAVE ANCHORED DEVELOPMENT LOCATED ON BUSY NAMEOKI ROAD
- 1,600 - 3,200 SF AVAILABLE
- OUTSTANDING ACCESS AND VISIBILITY
- JOIN SHOP 'N SAVE, APPLEBEE'S, CATO, HIBBETT SPORTS, PAYLESS SHOES AND CLUB FITNESS
- 20,300 CARS PER DAY PASS IN FRONT OF PROPERTY ON NAMEOKI ROAD

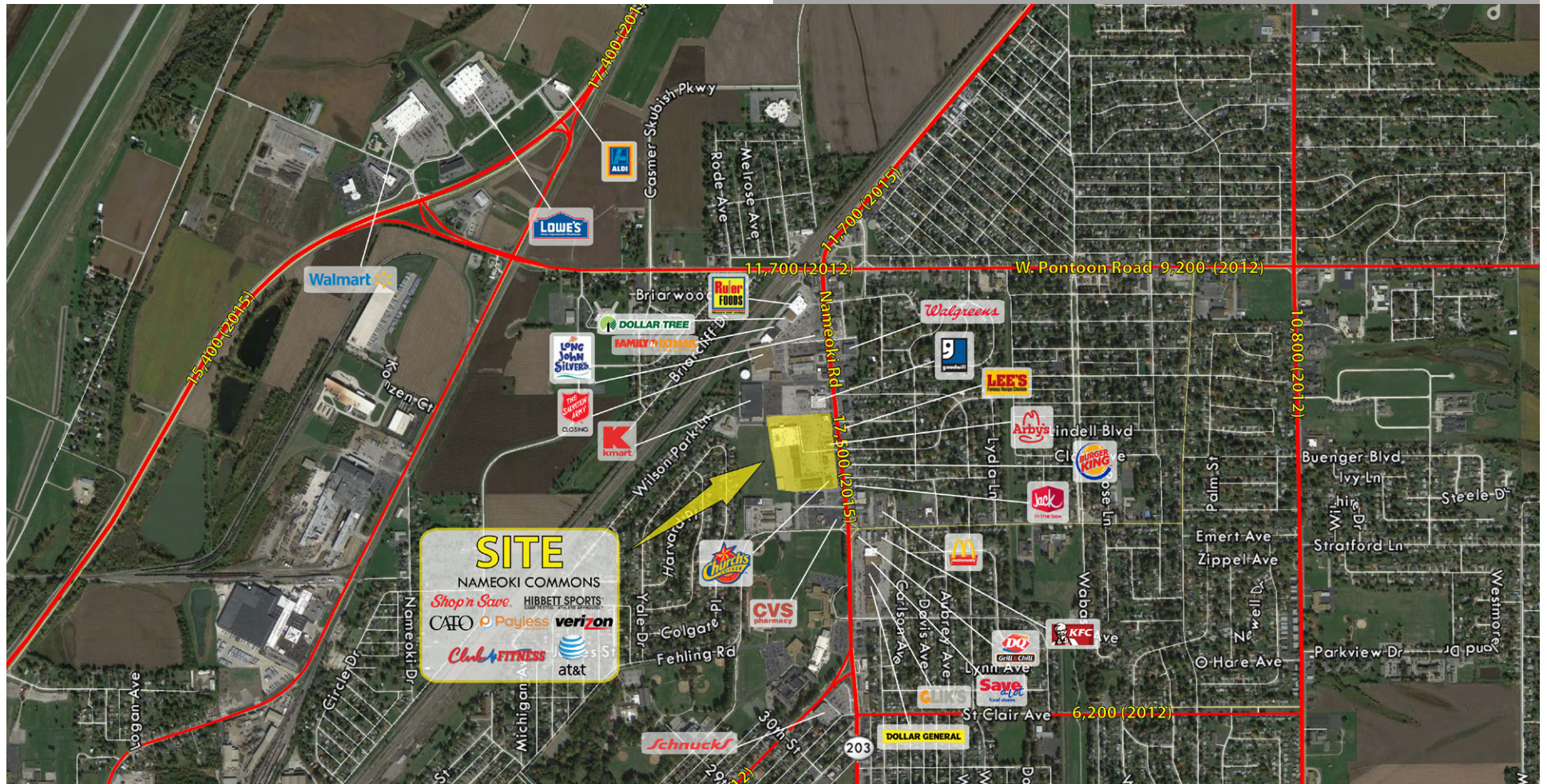


L<sup>3</sup> CORPORATION  
COMMERCIAL REAL ESTATE

211 N. LINDBERGH BLVD., SUITE 150  
SAINT LOUIS, MISSOURI 63141  
314.469.7400 • WWW.L3CORP.NET



# A E R I A L



KEVIN SHAPIRO

314.282.9831 (DIRECT)

314.469.7400 (OFFICE)

314.283.4691 (MOBILE)

KEVIN@L3CORP.NET

ALEX APTER

314.282.9834 (DIRECT)

314.469.7400 (OFFICE)

314.488.5900 (MOBILE)

ALEX@L3CORP.NET



**L<sup>3</sup> CORPORATION**  
COMMERCIAL REAL ESTATE

211 N. LINDBERGH BLVD. SUITE 100  
SAINT LOUIS, MISSOURI 63141  
314.469.7400 WWW.L3CORP.NET