



1
R Elevation A (East)
NTS.



2
R Elevation B (North)
NTS.



RICHLAND COUNTY MALL

535 N. WEST ST. OLNEY, IL 62450

1,436 SF (+/- 0.5 AC) OUTLOT AVAILABLE
IN RULER FOODS AND GLIK'S ANCHORED CENTER

RICHLAND COUNTY MALL

DEMOGRAPHICS

PLEASE CONTACT:

L³ CORPORATION

RICK SPECTOR
DESIGNATED MANAGING BROKER

314.282.9827 (DIRECT)

314.708.2009 (MOBILE)

RICK@L3CORP.NET

GO TO:

SITE PLAN

PICTURES

MARKET AERIAL

VISIT METRICS

JAN 1st, 2023 - DEC 31st, 2023 • DATA PROVIDED BY PLACER.AI

VISITS/YEAR



512 K

VISITORS



85.1 K

VISIT FREQUENCY



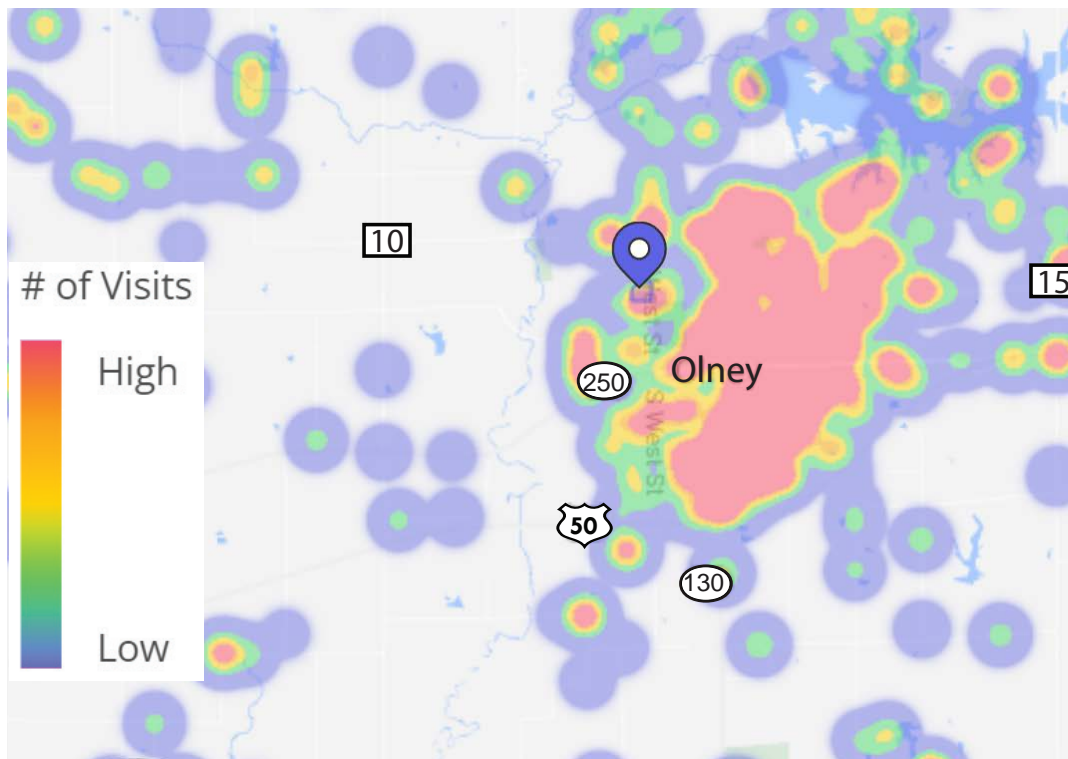
6.01

AVG. DWELL TIME



36 MIN

HEAT MAP • PER PLACER.AI



POPULATION ANALYSIS

POPULATION



15 MILE
23,531

30 MILES
97,444

HOUSEHOLDS



15 MILE
8,723

30 MILES
39,224

AVG HH INCOME



15 MILE
\$68,866

30 MILES
\$68,713



VIEW & DOWNLOAD:

PLACER.AI REPORT

DEMO REPORT

The information in this flyer has been obtained from sources believed reliable. While we do not doubt its accuracy, we have not verified it and make no guarantee about it. It is your responsibility to independently confirm its accuracy and completeness. Any projections, opinions, assumptions or estimates used are for example only and do not represent the current or future performance of the property. The value of this transaction to you depends on tax and other factors which should be evaluated by your tax, financial and legal advisors. You and your advisors should conduct a careful, independent investigation of the property to determine to your satisfaction the suitability of the property for your needs.

RICHLAND COUNTY MALL

SITE PLAN

PLEASE CONTACT:

L³ CORPORATION

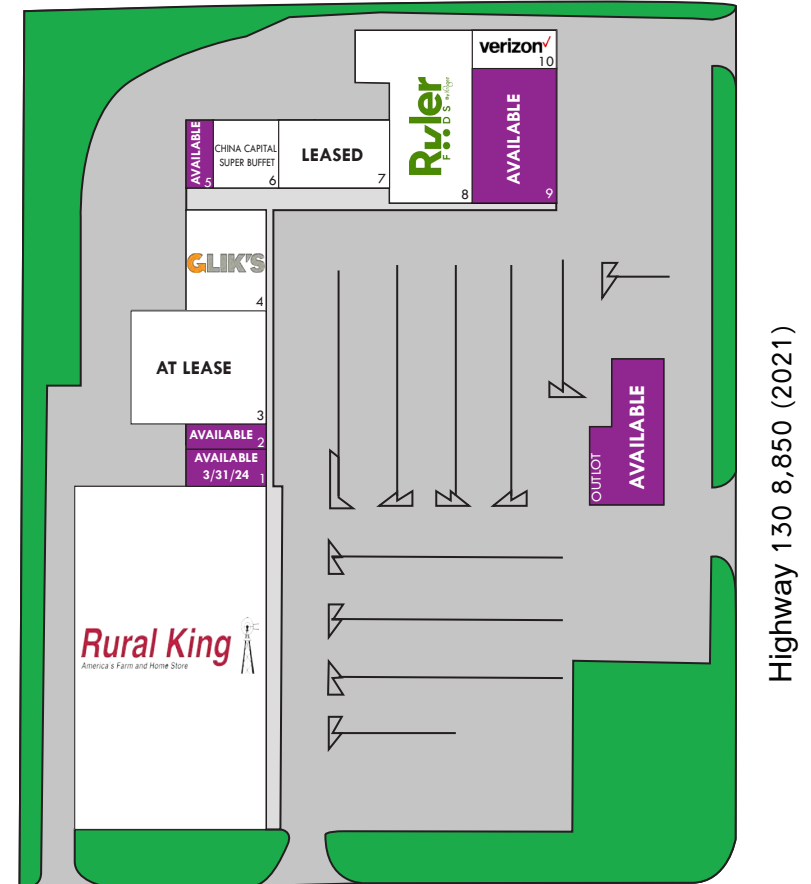
RICK SPECTOR
DESIGNATED MANAGING BROKER

314.282.9827 (DIRECT)

314.708.2009 (MOBILE)

RICH@L3CORP.NET

<u>SPACE</u>	<u>TENANT</u>	<u>SF</u>
1	AVAILABLE 3/31/24	1,765 SF
2	AVAILABLE	1,292 SF
3	At Lease	19,500 SF
4	Glik's	6,711 SF
5	AVAILABLE	1,440 SF
6	China Capital Super Buffet	3,495 SF
7	Leased	4,915 SF
8	Ruler Foods	19,000 SF
9	AVAILABLE	12,003 SF
10	Verizon	2,904 SF
OUTLOT	AVAILABLE	1,436 SF (± 0.5 AC)
NAP	Rural King	67,000 SF



- RULER FOODS AND GLIK'S ANCHORED SITE
- SHADOW ANCHORED BY RURAL KING
- JR. ANCHOR, OUTLOT AND SMALL SHOP SPACE AVAILABLE
- 1,436 SF (+/- 0.5 AC) OUTLOT AVAILABLE
- LEASE RATE: CALL BROKER FOR DETAILS



RICHLAND COUNTY MALL

PHOTOS

PLEASE CONTACT:

L³ CORPORATION

RICK SPECTOR
DESIGNATED MANAGING BROKER

314.282.9827 (DIRECT)

314.708.2009 (MOBILE)

RICK@L3CORP.NET



- FULL RENOVATION, INCLUDING RENOVATED FACADES AND PARKING LOT, COMING IN LATE 2024
- NEW TO MARKET APPAREL ANCHOR SET TO OPEN IN EARLY 2025
- RULER FOODS, GLIKS, AND HIBBETT SPORTING GOODS ANCHORED CENTER
- SHADOW ANCHORED BY RURAL KING
- FORMER BANK OUTLOT NOW AVAILABLE (+/- 0.5 ACRES)



The information in this flyer has been obtained from sources believed reliable. While we do not doubt its accuracy, we have not verified it and make no guarantee about it. It is your responsibility to independently confirm its accuracy and completeness. Any projections, opinions, assumptions or estimates used are for example only and do not represent the current or future performance of the property. The value of this transaction to you depends on tax and other factors which should be evaluated by your tax, financial and legal advisors. You and your advisors should conduct a careful, independent investigation of the property to determine to your satisfaction the suitability of the property for your needs.

RICHLAND COUNTY MALL

MARKET AERIAL

PLEASE CONTACT:

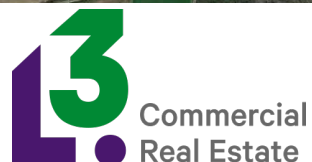
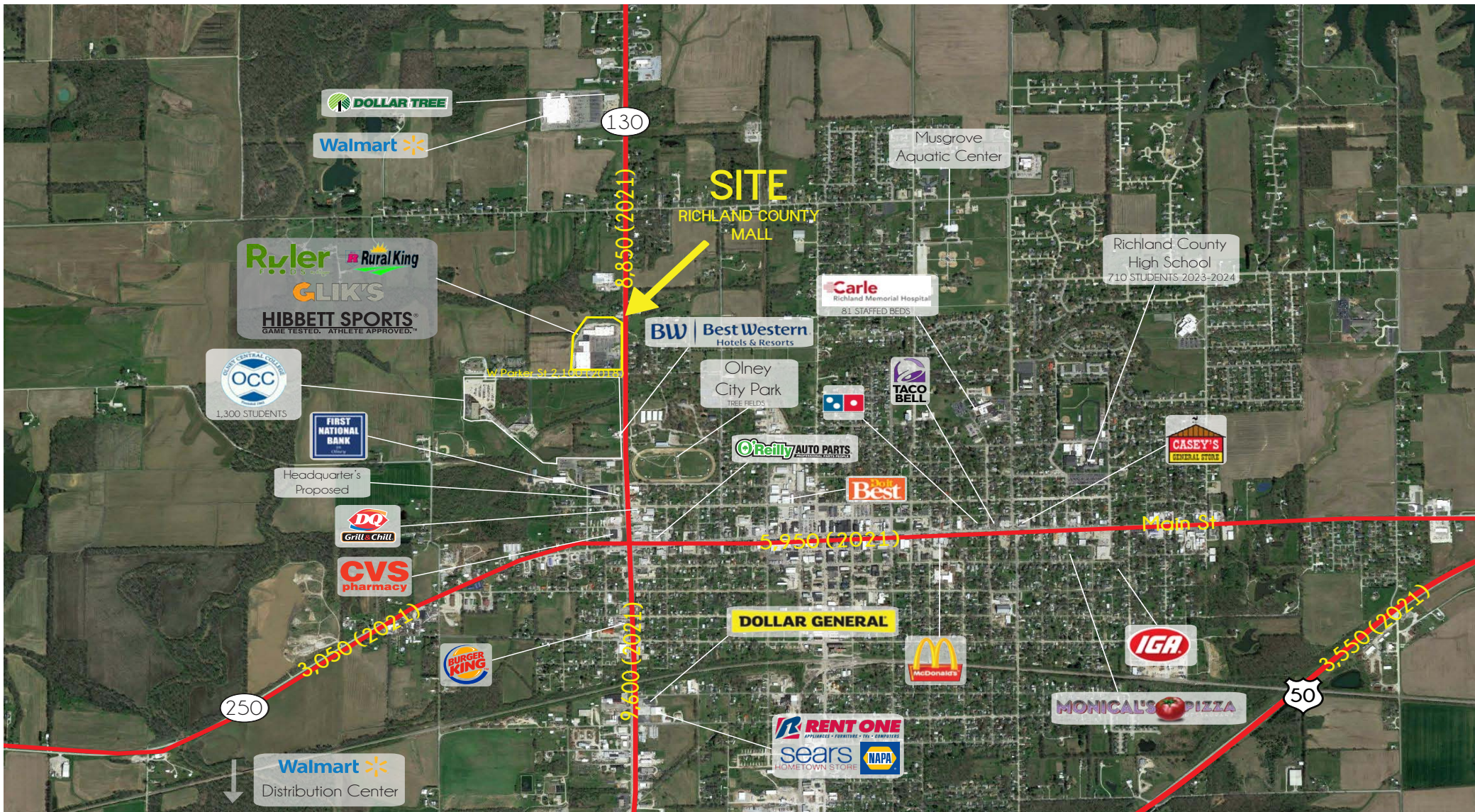
L³ CORPORATION

RICK SPECTOR
DESIGNATED MANAGING BROKER

314.282.9827 (DIRECT)

314.708.2009 (MOBILE)

RICK@L3CORP.NET



The information in this flyer has been obtained from sources believed reliable. While we do not doubt its accuracy, we have not verified it and make no guarantee about it. It is your responsibility to independently confirm its accuracy and completeness. Any projections, opinions, assumptions or estimates used are for example only and do not represent the current or future performance of the property. The value of this transaction to you depends on tax and other factors which should be evaluated by your tax, financial and legal advisors. You and your advisors should conduct a careful, independent investigation of the property to determine to your satisfaction the suitability of the property for your needs.