



7200 S LINDBERGH BLVD

SAINT LOUIS, MO 63125

0.87 ACRE LOT WITH 2,112 SF BUILDING FOR SALE



# 7002 S LINDBERGH BLVD

## SURVEY & DEMOGRAPHICS

PLEASE CONTACT:

L<sup>3</sup> CORPORATION

RICK SPECTOR

314.282.9827 (DIRECT)

314.708.2009 (MOBILE)

RICK@L3CORP.NET

## POPULATION ANALYSIS

POPULATION

HOUSEHOLDS

AVG HH INCOME



1 MILE

10,953

1 MILE

5,133

1 MILE

\$68,765

3 MILES

95,294

3 MILES

41,476

3 MILES

\$83,600

5 MILES

198,361

5 MILES

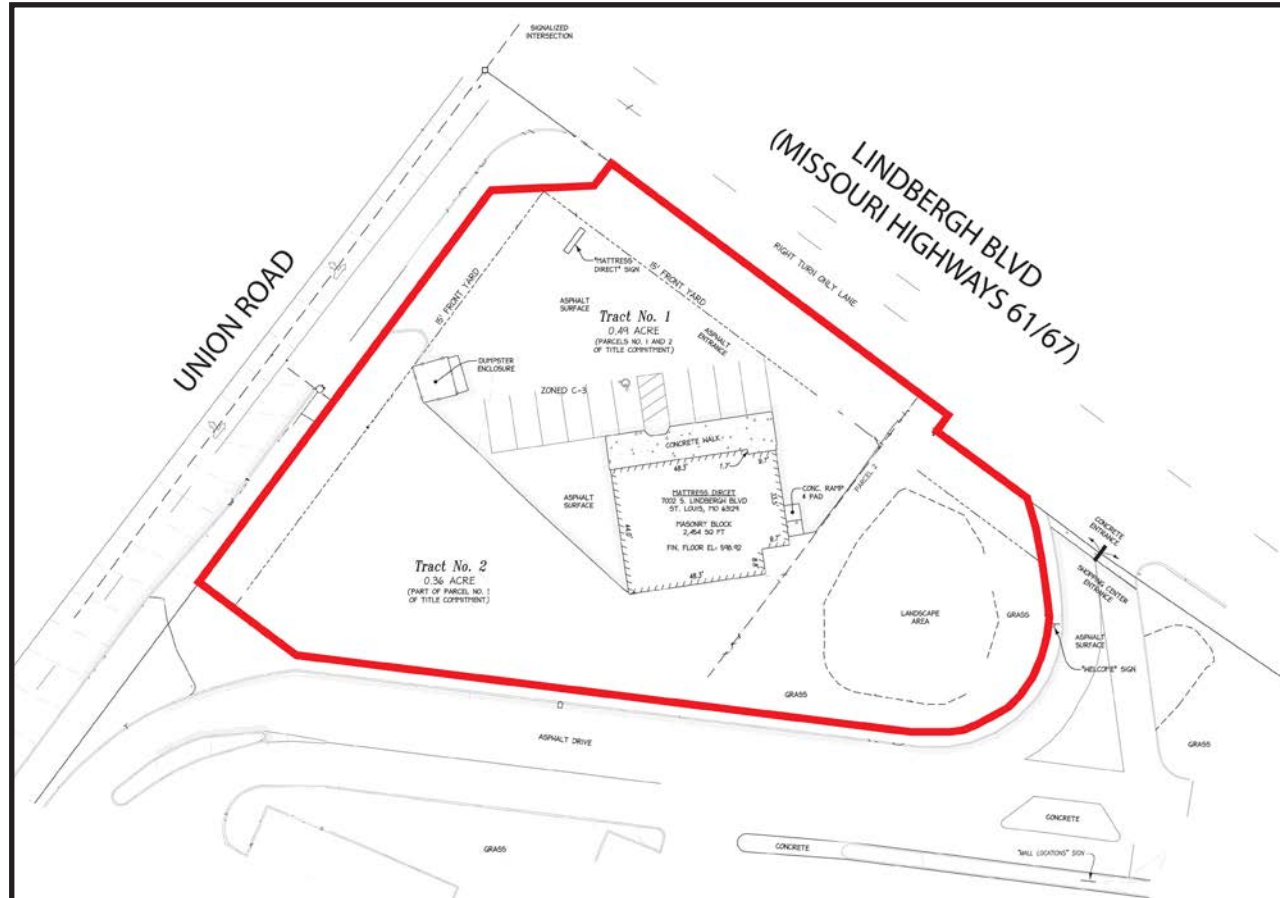
86,010

5 MILES

\$86,480

VIEW &  
DOWNLOAD:

DEMO REPORT



- 0.87 ACRES FOR SALE ON LINDBERGH BLVD (40,796 VPD)
- EXISTING 2,112 SF BUILDING WITH PYLON SIGNAGE
- GREAT VISIBILITY AND FULL ACCESS OFF LINDBERGH BLVD AND UNION RD
- SHARED CROSS ACCESS WITH SOUTH COUNTY MALL
- CONTACT BROKER FOR PRICING



The information in this flyer has been obtained from sources believed reliable. While we do not doubt its accuracy, we have not verified it and make no guarantee about it. It is your responsibility to independently confirm its accuracy and completeness. Any projections, opinions, assumptions or estimates used are for example only and do not represent the current or future performance of the property. The value of this transaction to you depends on tax and other factors which should be evaluated by your tax, financial and legal advisors. You and your advisors should conduct a careful, independent investigation of the property to determine to your satisfaction the suitability of the property for your needs.



# 7002 S LINDBERGH BLVD

## ZOOM AERIAL

PLEASE CONTACT:

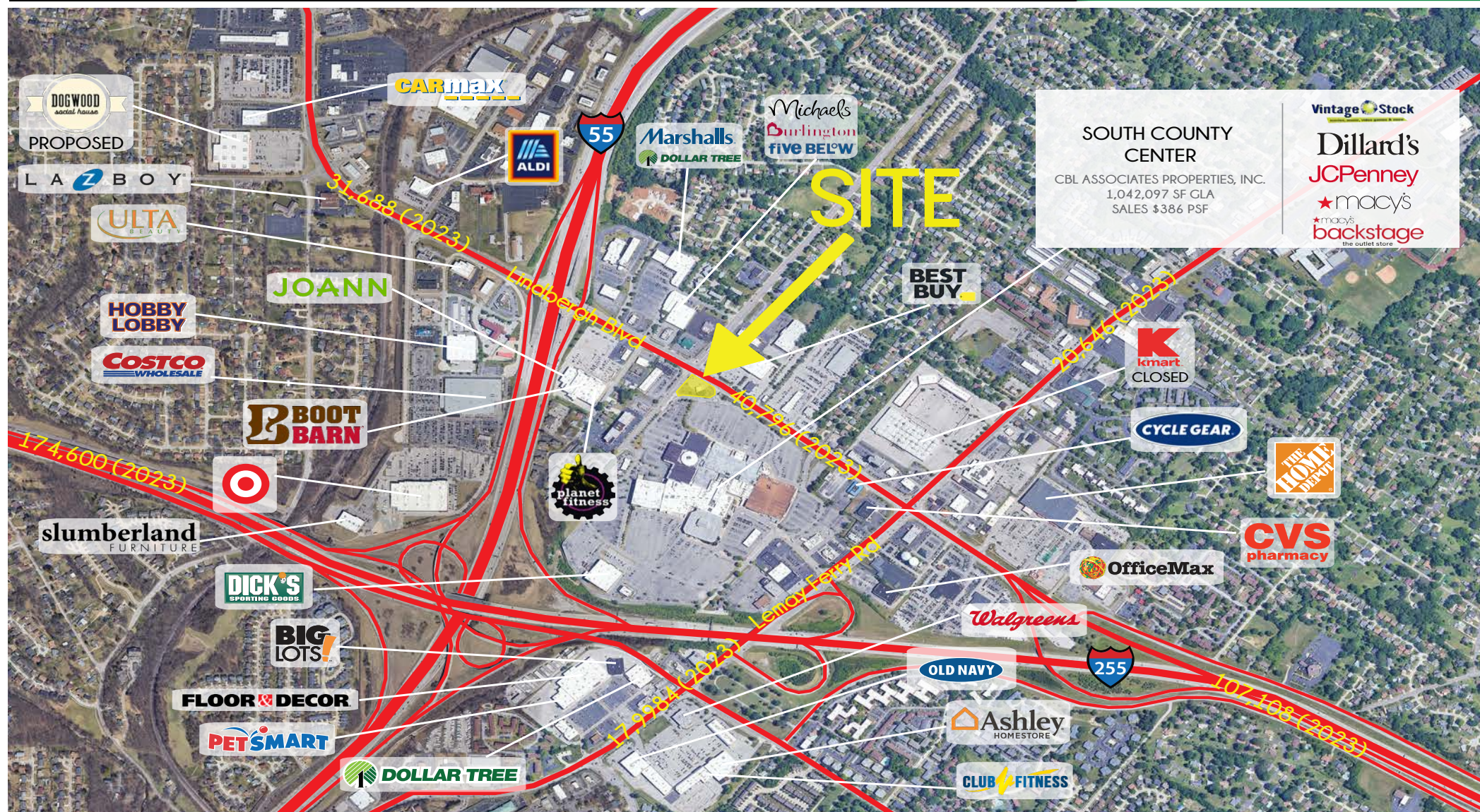
L<sup>3</sup> CORPORATION

RICK SPECTOR

314.282.9827 (DIRECT)

314.708.2009 (MOBILE)

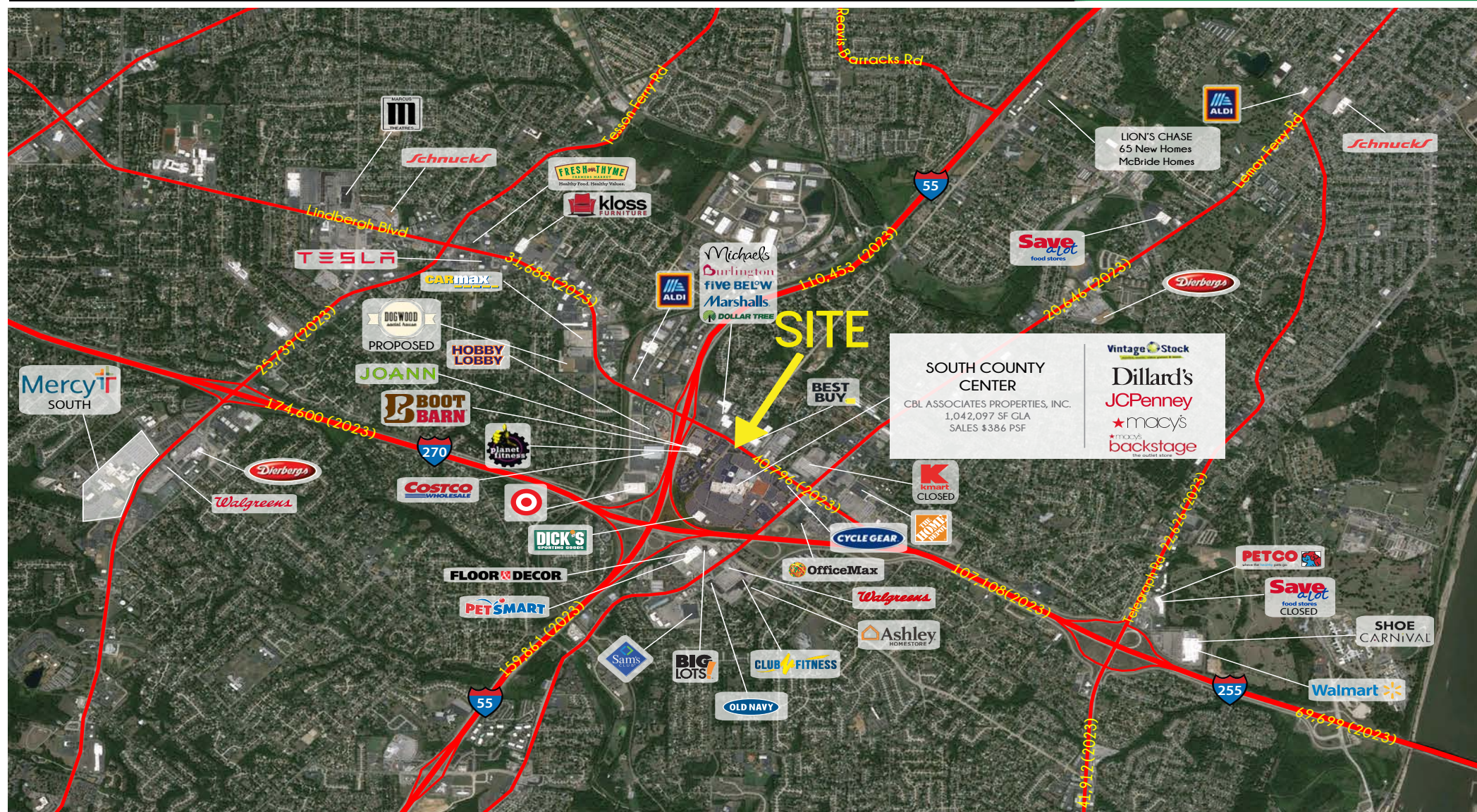
RICK@L3CORP.NET





# MARKET AERIAL

RICK@L3CORP.NET



The information in this flyer has been obtained from sources believed reliable. While we do not doubt its accuracy, we have not verified it and make no guarantee about it. It is your responsibility to independently confirm its accuracy and completeness. Any projections, opinions, assumptions or estimates used are for example only and do not represent the current or future performance of the property. The value of this transaction to you depends on tax and other factors which should be evaluated by your tax, financial and legal advisors. You and your advisors should conduct a careful, independent investigation of the property to determine to your satisfaction the suitability of the property for your needs.