



COMMERCIAL
30,075 SF
LAND

RESIDENTIAL
3.642
ACRES

2505 E. JACKSON BLVD

JACKSON, MO 63755

30,075 SF COMMERCIAL 136' FRONTAGE
3.642 ACRES RESIDENTIAL

XTEAM
RETAIL ADVISORS

2505 E. JACKSON BLVD

PICTURES & DEMOGRAPHICS

PLEASE CONTACT:
REBECCA THESSSEN
314.282.9836 (DIRECT)
314.620.0093 (MOBILE)
REBECCA@L3CORP.NET




L³ CORPORATION
JOHN NOTTER
314.282.9825 (DIRECT)
314.650.3600 (MOBILE)
JOHN@L3CORP.NET



COMMERCIAL TRACT:
\$421,050.00 / \$14.00 PSF

RESIDENTIAL TRACT:
\$634,596.00 / \$4.00 PSF

POPULATION ANALYSIS

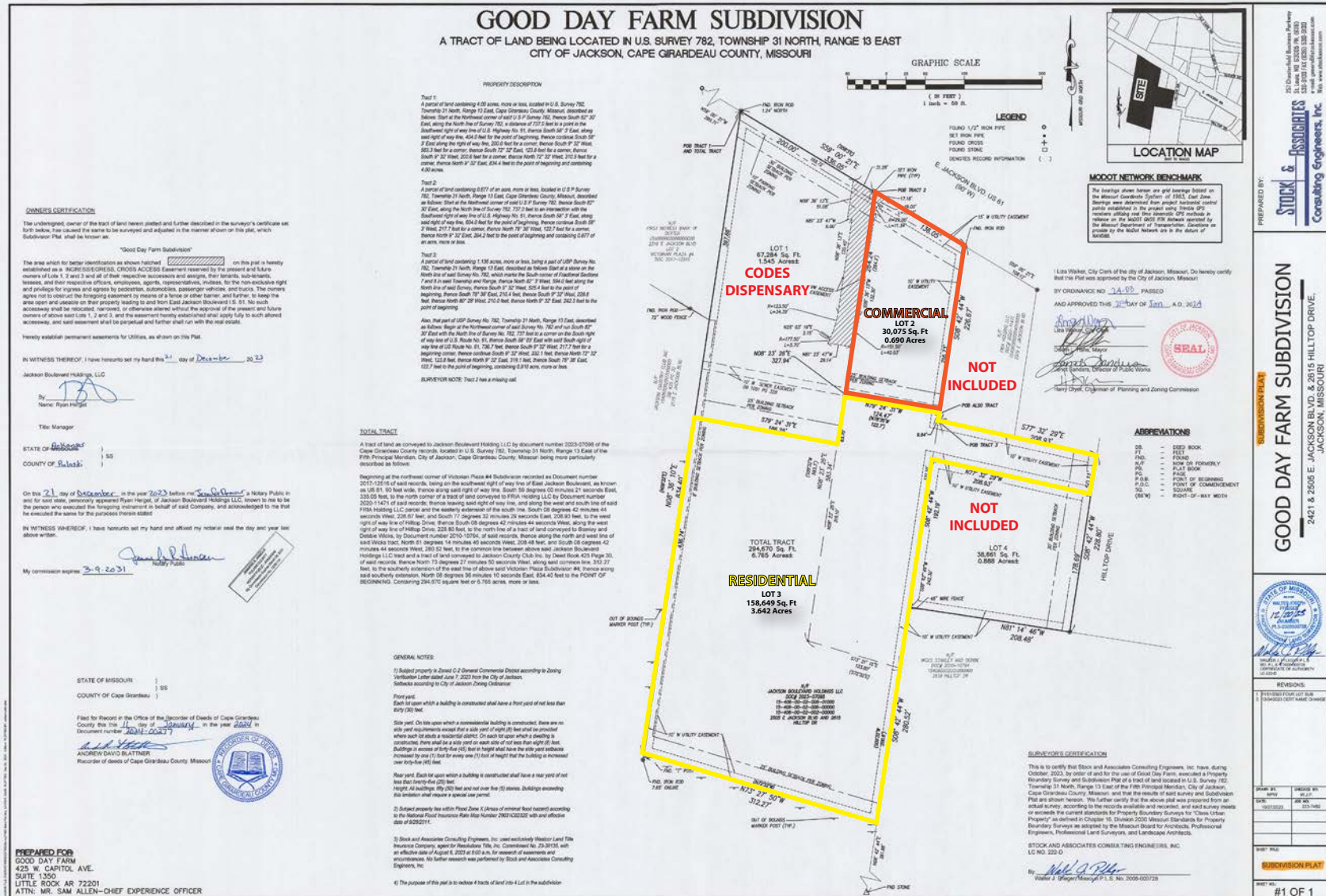
POPULATION		<u>3 MILE</u> 16,379	<u>5 MILES</u> 30,258	<u>10 MILES</u> 76,143
HOUSEHOLDS		<u>3 MILE</u> 6,480	<u>5 MILES</u> 11,843	<u>10 MILES</u> 30,111
AVG HH INCOME		<u>3 MILE</u> \$84,531	<u>5 MILES</u> \$86,576	<u>10 MILES</u> \$74,525

**VIEW &
DOWNLOAD:**

DEMO REPORT

2505 E. JACKSON BLVD
SUBDIVISION PLAT

JOHN@L3CORP.NET



The information in this flyer has been obtained from sources believed reliable. While we do not doubt its accuracy, we have not verified it and make no guarantee about it. It is your responsibility to independently confirm its accuracy and completeness. Any projections, opinions, assumptions or estimates used are for example only and do not represent the current or future performance of the property. The value of this transaction to you depends on tax and other factors which should be evaluated by your tax, financial and legal advisors. You and your advisors should conduct a careful, independent investigation of the property to determine to your satisfaction the suitability of the property for your needs.

2505 E. JACKSON BLVD

ZOOM AERIAL

PLEASE CONTACT:

REBECCA THESSEN

314.282.9836 (DIRECT)

314.620.0093 (MOBILE)

REBECCA@L3CORP.NET

L³ CORPORATION

JOHN NOTTER

314.282.9825 (DIRECT)

314.650.3600 (MOBILE)

JOHN@L3CORP.NET

