



SYNDICATE TRUST BUILDING

915 OLIVE STREET ST. LOUIS, MO 63101

1ST FLOOR OFFICE/RETAIL SPACES AVAILABLE
IN DOWNTOWN ST. LOUIS MULTI-FAMILY BUILDING

XTEAM
RETAIL ADVISORS

SYNDICATE TRUST BUILDING

SITE PLAN & DEMOS

PLEASE CONTACT:

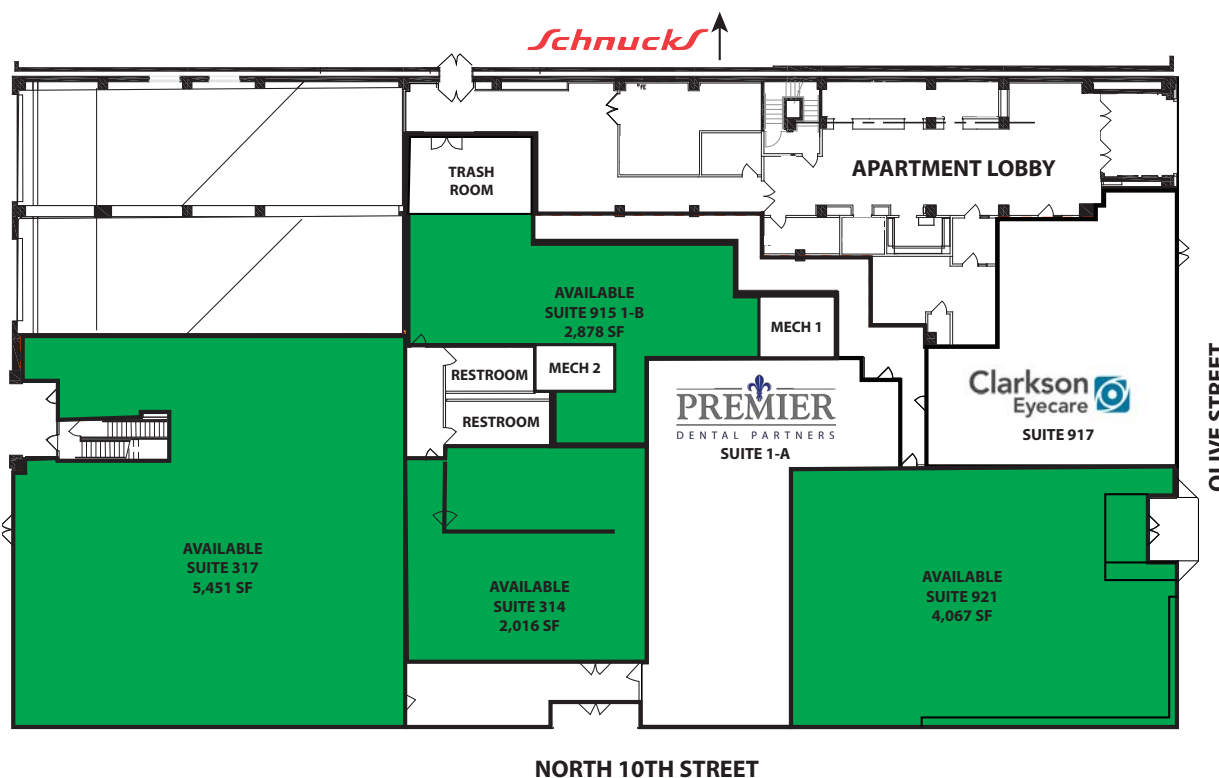
L³ CORPORATION

RICK SPECTOR




314.282.9827 (DIRECT)

314.708.2009 (MOBILE)

RICK@L3CORP.NET



POPULATION ANALYSIS

POPULATION	HOUSEHOLDS	AVG HH INCOME
		
<u>1 MILE</u>	<u>1 MILE</u>	<u>1 MILE</u>
14,723	8,390	\$72,125
<u>3 MILES</u>	<u>3 MILES</u>	<u>3 MILES</u>
77,696	37,283	\$69,890
<u>5 MILES</u>	<u>5 MILES</u>	<u>5 MILES</u>
211,256	99,443	\$65,788

- 2,016 SF TO 5,467 SF AVAILABLE IN SCHNUCKS ANCHORED SYNDICATE TRUST MULTI-FAMILY BUILDING
- SYNDICATE CONDOMINIUMS ARE 95% LEASED
- ADJACENT SCHUCKS HAS 259.3K VISITORS PER YEAR AND HAS INCREASED 21.7% IN VISITORS YEAR OVER YEAR PER PLACER.AI
- ACROSS THE STREET FROM WEBSTER UNIVERSITY
- ONLY TWO BLOCKS AWAY FROM ST. LOUIS CONVENTION CENTER
- ASKING RENT IS \$16.00 PSF WITH \$6.40 NNN

VIEW &
DOWNLOAD:

**DEMO
REPORT**

SYNDICATE TRUST BUILDING

PHOTOS

PLEASE CONTACT:

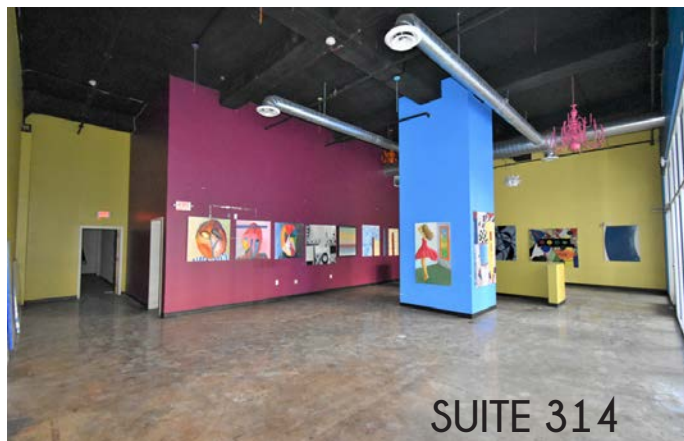
L³ CORPORATION

RICK SPECTOR

314.282.9827 (DIRECT)

314.708.2009 (MOBILE)

RICK@L3CORP.NET



The information in this flyer has been obtained from sources believed reliable. While we do not doubt its accuracy, we have not verified it and make no guarantee about it. It is your responsibility to independently confirm its accuracy and completeness. Any projections, opinions, assumptions or estimates used are for example only and do not represent the current or future performance of the property. The value of this transaction to you depends on tax and other factors which should be evaluated by your tax, financial and legal advisors. You and your advisors should conduct a careful, independent investigation of the property to determine to your satisfaction the suitability of the property for your needs.

SYNDICATE TRUST BUILDING

MARKET AERIAL

PLEASE CONTACT:

L³ CORPORATION

RICK SPECTOR

314.282.9827 (DIRECT)

314.708.2009 (MOBILE)

RICK@L3CORP.NET



The information in this flyer has been obtained from sources believed reliable. While we do not doubt its accuracy, we have not verified it and make no guarantee about it. It is your responsibility to independently confirm its accuracy and completeness. Any projections, opinions, assumptions or estimates used are for example only and do not represent the current or future performance of the property. The value of this transaction to you depends on tax and other factors which should be evaluated by your tax, financial and legal advisors. You and your advisors should conduct a careful, independent investigation of the property to determine to your satisfaction the suitability of the property for your needs.